

New Acton  
South –  
Cladding  
Elevation Images



# North Elevation

Source: Page 25 of The Warrington Fire Report - Combustible cladding risk assessment CRA1.1 New Acton South, Block 3, Section 24, City, ACT

Figure 3 / Cladding Element 7 / Vertical column to north elevation - **Non-combustible & will not be replaced**



- Cladding element 1- External spandrel panels to north, east and south elevation
- Cladding element 5- External timber fins to north elevation
- Cladding element 7- Vertical column to north elevation
- Cladding element 8- Roof parapet

Figure 3 North elevation

# East Elevation

Source: Page 26 of The Warrington Fire Report - Combustible cladding risk assessment CRA1.1 New Acton South, Block 3, Section 24, City, ACT

Figure 4 / Cladding Element 3 / Vertical feature to south elevation - **Non-combustible & will not be replaced**

Figure 4 / Cladding Element 7 / Vertical column to north elevation - **Non-combustible & will not be replaced**

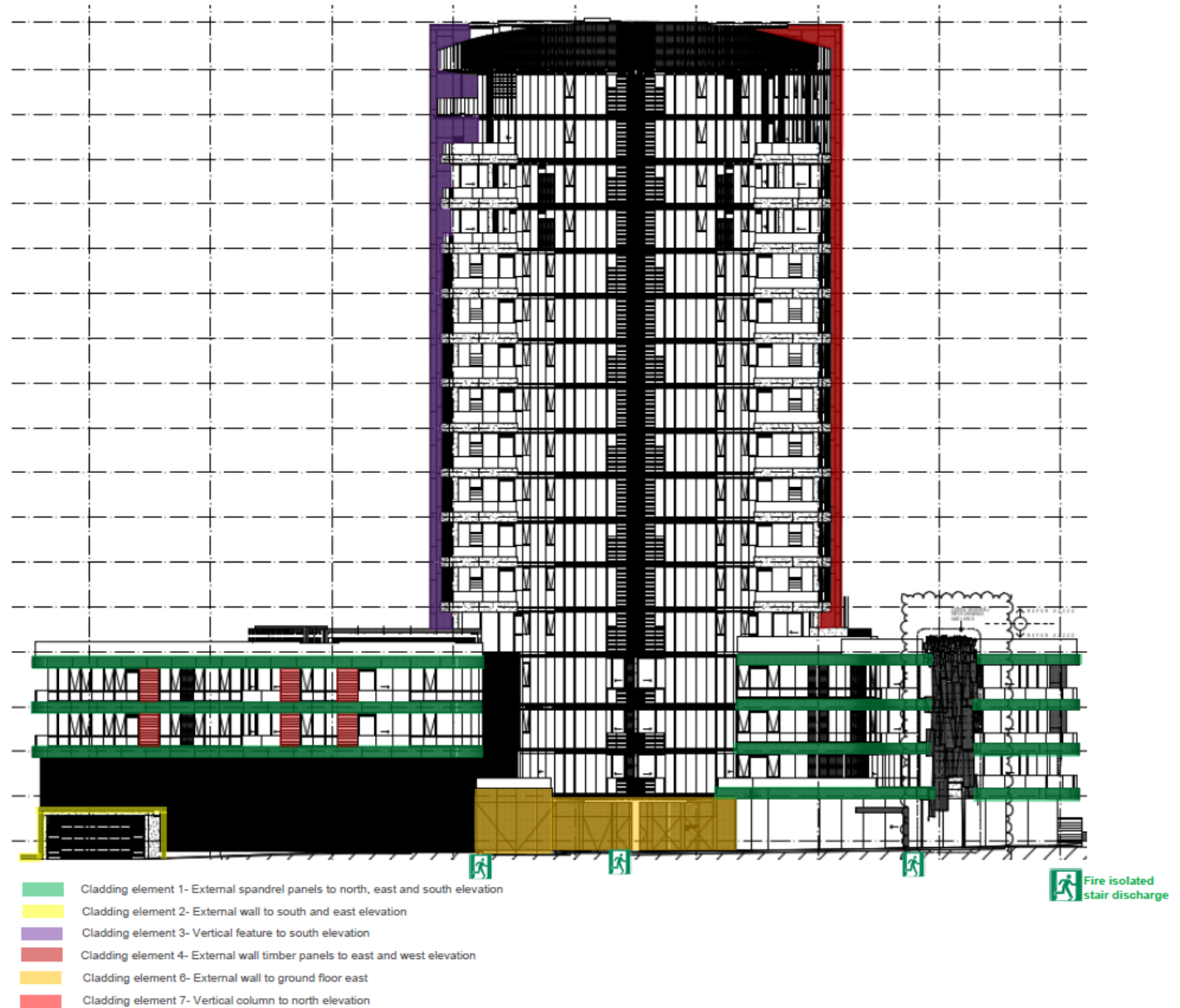


Figure 4 East elevation

# West Elevation

Source: Page 27 of The Warrington Fire Report - Combustible cladding risk assessment CRA1.1 New Acton South, Block 3, Section 24, City, ACT

Please note: The replacement of the cedar panelling present internal to balconies, will occur, however it is not shown on the elevation diagrams

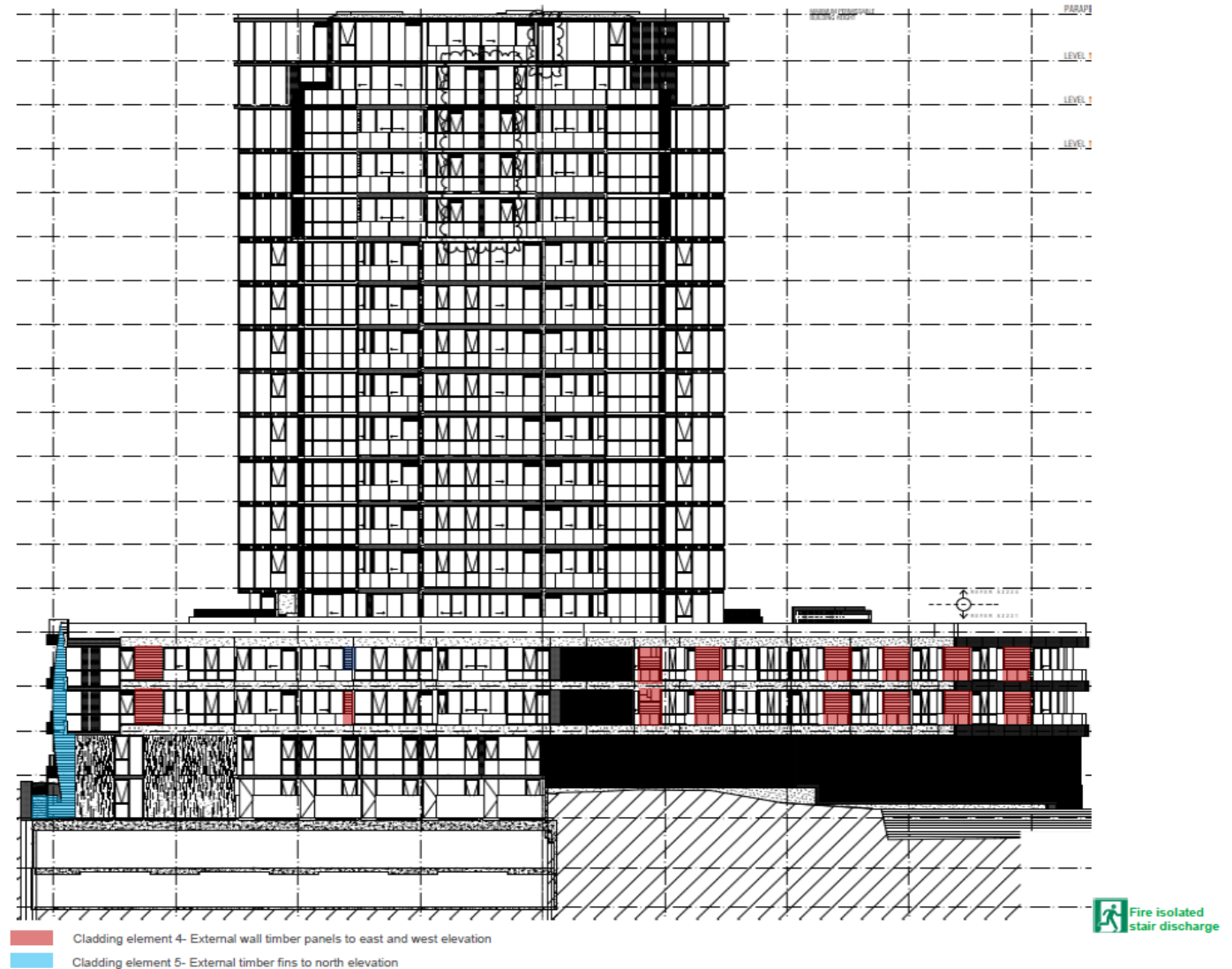


Figure 5 West elevation

# West Elevation

Source: Page 28 of The Warrington Fire Report - Combustible cladding risk assessment CRA1.1 New Acton South, Block 3, Section 24, City, ACT

Figure 6 / Cladding Element 3 / Vertical feature to south elevation - **Non-combustible & will not be replaced**

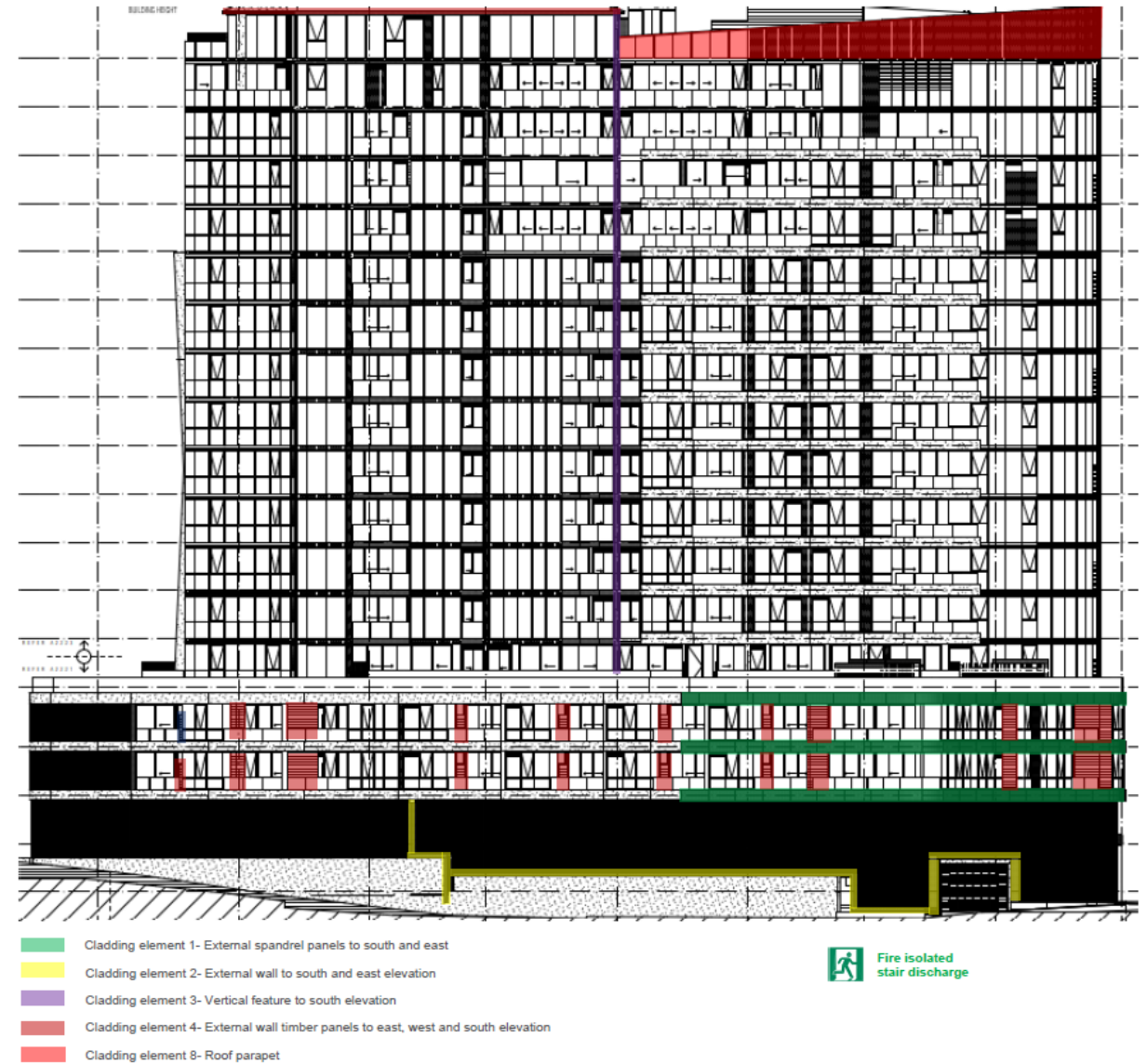


Figure 6 South elevation